

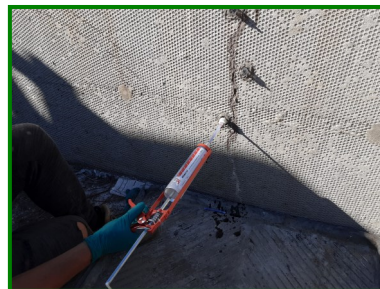


**Project:** Chesil Cliff House, Croyde

**Client:** Palmer Birch

Concrete Repairs, Crack Stitching & Resin Injection

**Date:** June 2020



## The Problem

This property featured on the Grand Designs Television programme “saddest episode ever” episode when the owners who were planning to build an iconic lighthouse home ran out of money to complete the works. The project was left untouched for 10 years and during that time various uncompleted areas which had left concrete and steel unprotected had started showing signs of deterioration. HOP Consulting were brought in for guidance on the remedial works necessary to bring the project back online, once funding became available to complete the project.



## The Solution

Various cracks that had been identified required repair using crack stitching techniques. Crack stitching bars are stainless steel reinforced rods that are chemically bonded into bed joints to stitch together cracks, redistributing tensile forces and stabilising a structure. The bed joints are cut out and then the crack stitching bar is grouted in place to prevent any future movement. There were also cracks around the external pool wall, which we resin injected a PU resin to stop any future leaks. Defects to other concrete areas were also identified which were repaired using traditional concrete repair techniques followed by application of an MCI Migration Corrosion Inhibitor impregnating solution.

© South West Concrete Repairs Ltd | Registered in England & Wales No. 3431115

Unit 17, Reynolds Park  
8 Bell Close  
Newnham Industrial Estate  
Plymouth  
PL7 4FE

**E** sales@swconcreterepairs.co.uk  
**W** www.swconcreterepairs.co.uk  
**T** 01752 561300  
**F** 01752 605900